

# Air Conditioning

## Product Information

### PLA-RP125BA : Standard Inverter Heat Pump

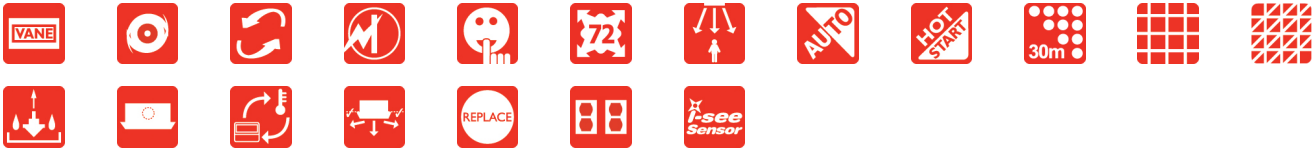
R410A 4-Way Blow Ceiling Cassette System



Our standard inverter range offers customers all the features and benefits of inverter technology whilst being cost effective.



## FEATURES



### INDOOR

Heating Capacity (kW) (nominal)	14.0 (5 - 16)
Cooling Capacity (kW) (nominal)	12.3 (5.5 - 14)
Heating Capacity (kW) (UK)	11.9 (4.25 - 13.6)
Cooling Capacity (kW) (UK)	11.3 (5.05 - 12.9)
SHF (nominal and UK)	0.71
COP / EER (nominal)	3.41 / 3.01
SCOP / SEER	3.7 / 3.6
Energy Efficiency Class - Heating / Cooling	N/A / N/A
Pipe Size Gas (mm [in])	15.88 (5/8")
Pipe Size Liquid (mm [in])	9.52 (3/8")
Airflow (m³/min) Lo-Mi-Mi2-Hi	22 - 25 - 28 - 31
Sound Pressure Level (dBA) Lo-Mi-Mi2-Hi	34 - 36 - 39-41
Sound Power Level (dBA) Cooling	63
Dimensions (mm) Width x Depth x Height	840(950) x 840(950) x 298(35)
Weight (kg) Unit / grille	25 / 6
Electrical Supply	FED BY OUTDOOR UNIT
Phase	SINGLE
Fuse Rating (BS88) - HRC (A)	6
Interconnecting Cable No. Cores	4

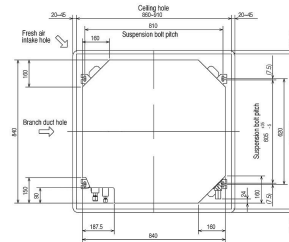
### OUTDOOR

Sound Pressure Level (dBA) Heating / Cooling	55 / 51
Sound Power Level (dBA) Cooling	71
Weight (kg)	101
Dimensions (mm) Width x Depth x Height	950 x (330+30) x 1350
Electrical Supply	380-415V,50HZ
Phase	THREE
System Power Input (kW) - Heating / Cooling (nominal)	4.11 / 4.09
System Power Input (kW) - Heating / Cooling (UK)	3.66 / 3.48
Starting Current (A)	5
System Running Current (A) [MAX] - Heating / Cooling	7.03 / 7.18 [14.0]
Fuse Rating (BS88) - HRC (A)	16
Mains Cable No. Cores	5
Max Pipe Length (m)	50
Max Height Difference (m)	30
Charge R410A (kg) - Pre charged length (m)	3 - 30

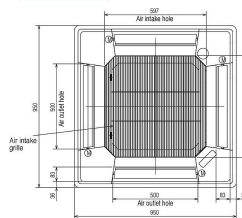
### DIMENSIONS

PLA-RP125BA

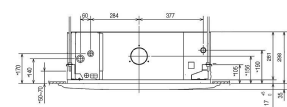
Upper View >



Front View >



Side View >



### DIMENSIONS

PUHZ-P125YHA

